
Piping

The piping, considered as a whole, is unquestionably one of the most distinctive elements of a Fedegari plant.

The importance of this system in achieving high process performance is in fact well-known. However, in customized machines this element becomes even more critical, since each machine or plant is a "one-off" and, as such, cannot benefit, except minimally,

from the optimization allowed by mass production. Once again, Fedegari's originality has allowed to devise a construction model which allows to provide systems with high-level features.



This result has been achieved by acting on different fronts, from design to the development of standardized assemblies to the use of specific components (both purchased and manufactured in-house).

As regards design, programs for the CAD workstation have been developed which use the standard modules for specific areas, limiting redesign to the parts of the system that have never been designed before.

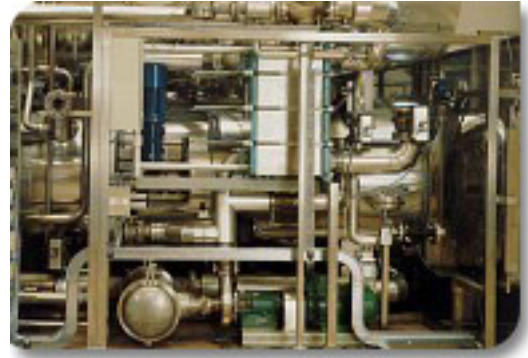
The use of these assemblies ensures that some parts of the piping are always manufactured identically, even from a physical viewpoint.

Finally, the use of specific components (as opposed to the use of different components each time, possibly requested by the end-user) allows the optimization or selection of products which have a known performance, leading to higher overall reliability of the system.

Regardless of its application, each piping is currently entirely assembled using exclusively AISI 316L stainless steel.

The entire system is in fact assembled by using components and techniques which are generally used to manufacture sterile fluid loops.

Other features of Fedegari's piping are the lack of any crevices that might compromise fluid sterility, the exclusive use of "sanitary" components, extreme construction efficiency and simple maintenance.



[Download Product Data Sheet in PDF Format](#)

In order to view PDF documents you need the FREE
Adobe Acrobat Reader



[Close Window](#)